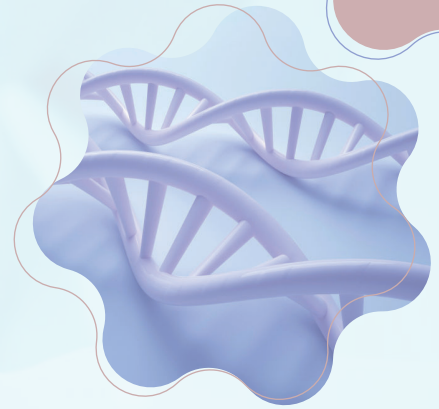


Human Septin9 Gene Methylation Detection Kit (Real-Time PCR assay)

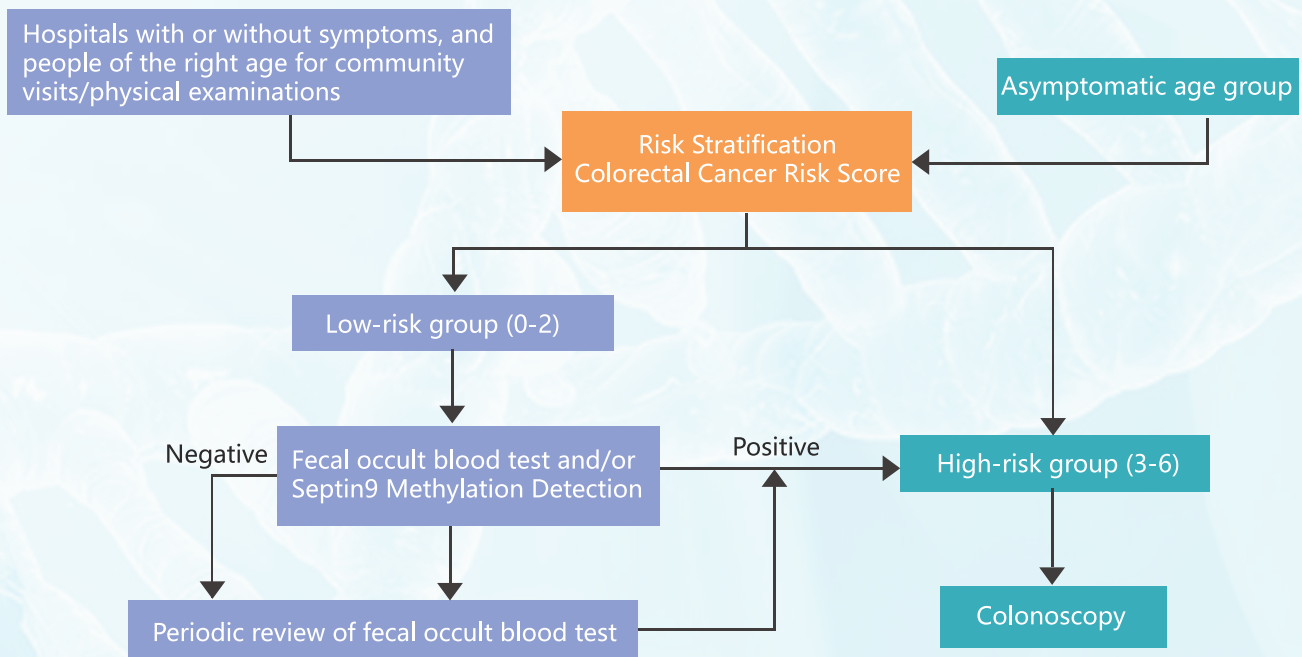


COLORECTAL CANCER AND SEPTIN9 GENE

Septin is a family of highly conserved cytoskeletal protein genes in evolution. It has GTPase activity. The Septin9 gene in the family is involved in various physiological activities such as cell division, cell migration and DNA repair.

Patients with colorectal cancer often have a certain degree of methylation in the promoter region of the Septin9 gene; this abnormal methylation will inhibit the tumor suppressor effect of the Septin9 gene, affect the occurrence and development of colorectal cancer.

The sensitivity of Septin9 for screening colorectal cancer was 82.22%, which was significantly higher than that of CEA; the specificity was 89.09%, which was higher than that of FOBT. Septin9 detection has high sensitivity and specificity in various indicators of colorectal detection, and has the advantages of non-invasive, convenient sampling, and stable method. It can be used as an important auxiliary method for clinical diagnosis of colorectal cancer.



Colorectal cancer screening process

DETECTED GENE

Detection of Septin9 methylation loci in patients with colorectal cancer.

PRODUCT INFORMATION

Product Name	Technology	Pack Size	Instruments Validated	Sample Type
Human Septin9 Gene Methylation Detection Kit	Real-Time PCR assay	20 Tests/Kit	Stratagene Mx3000P™, ABI7500 etc	Peripheral blood

DETECTION SIGNIFICANCE

- » Assist clinical early screening of colorectal cancer.
- » Assist clinicians to formulate intervention or control measures in time.

ELIGIBLE POPULATION

- » Patients with chronic enteritis and family colon polyps.
- » People over 50 years old.

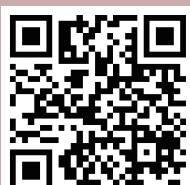
FEATURES & ADVANTAGES

Accuracy and Reliability: Use pre-load PCR tube to effectively avoid cross-contamination.

Ease of Use: The process is standardized and the experimental procedure is simple.

Great Versatility: Validated on the most common qPCR machines with stable results.

DETECTION PROCESS



For Research Use Only

T e l : +86-592-7578317

Email: spacegen@ispacegen.com

www.sspacegen.com

XIAMEN SPACEGEN CO.,LTD

XIAMEN SPACESEQ MEDLAB CO.,LTD

A d d : NO.2041,XizhouRoad,Xike Town, Tong'an District,Xiamen City, Fujian Province, China

SUZHOU SPACESEQ MEDLAB CO.,LTD

4th Floor, Building 1, No. 777 Kangyuan Road, Chengyang Street, Suzhou City 213000